



India Meteorological Department
(Ministry of Earth Sciences)

NATIONAL BULLETIN NO. 3 (Land/03/2025)

TIME OF ISSUE: 1420 HOURS IST

DATED: 17.07.2025

FROM: INDIA METEOROLOGICAL DEPARTMENT
24643965/24699216/24623220)

(FAX NO.

TO: CONTROL ROOM, NDM, MINISTRY OF HOME AFFAIRS ([FAX.NO. 23093750](#))
CONTROL ROOM NDMA ([FAX.NO. 26701729](#))
CABINET SECRETARIAT (FAX.NO.23012284, 23018638)
PS TO HON'BLE MINISTER FOR S & T AND EARTH SCIENCES (FAX NO.23316745)
SECRETARY, MOES (FAX NO. 24629777)
H.Q. (INTEGRATED DEFENCE STAFF AND CDS) (FAX NO. 23005137/23005147)
DIRECTOR GENERAL, DOORDARSHAN (23385843)
DIRECTOR GENERAL, AIR (23421105, 23421219)
PIB MOES (FAX NO. 23389042)
UNI (FAX NO. 23355841)
D.G. NATIONAL DISASTER RESPONSE FORCE (NDRF) (FAX NO. 26105912, 2436 3260)
DIRECTOR, PUNCTUALITY, INDIAN RAILWAYS (FAX NO. 23388503)
CHIEF SECRETARY, GOVT. OF UTTAR PRADESH (FAX NO. 0522-2239283)
CHIEF SECRETARY, GOVT. OF MADHYA PRADESH (FAX NO. 0755-2551521)
CHIEF SECRETARY, GOVT. OF RAJASTHAN (FAX NO. 0141-2227114)
CHIEF SECRETARY, GOVT. OF BIHAR (FAX NO. 0612-2217085)
CHIEF SECRETARY, GOVT. OF DELHI (FAX NO. 011-23392101)
CHIEF SECRETARY, GOVT. OF CHANDIGARH (FAX NO. 0172-2740608)
CHIEF SECRETARY, GOVT. OF JHARKHAND (FAX NO. 0651-2400255)
CHIEF SECRETARY, GOVT. OF CHHATTISGARH (FAX NO. 0771-2221206)

Subject: Depression over Southeast Uttar Pradesh & adjoining northeast Madhya Pradesh

The Depression over Southeast Uttar Pradesh moved westwards with a speed of 8 kmph during past 6 hours and lay centred at 1130 hrs IST of today, the 17th July, 2025, over Southeast Uttar Pradesh and adjoining northeast Madhya Pradesh, near latitude 25.2°N and longitude 81.3°E, 50 km west-southwest of Prayagraj, 80 km north-northeast of Satna, 100 km east-southeast of Banda and 140km east of Khajuraho.

It is likely to move west-northwestwards across south Uttar Pradesh and adjoining north Madhya Pradesh during next 2-days.

Warnings:

(i) Rainfall Warning:

East Uttar Pradesh: Light to moderate rainfall at most places with **heavy to very heavy rainfall** at a few places with **extremely heavy rainfall (≥21 cm)** at isolated places is very likely on 17th July and **very heavy rainfall** at isolated places on 18th July.

West Uttar Pradesh: Light to moderate rainfall at most places with **heavy to very heavy rainfall** at a few places with **extremely heavy rainfalls (≥ 21 cm)** at isolated places is very likely on 17th July; **heavy to very heavy rainfall** at isolated places on 18th July and **heavy rainfall** at isolated places on 19th July.

East Madhya Pradesh Light to moderate rainfall at most places with **heavy to very heavy rainfall** at a few places with **extremely heavy rainfall (≥ 21 cm)** at isolated places is very likely on 17th July and **heavy rainfall** at isolated places on 18th July.

West Madhya Pradesh: Light to moderate rainfall at most places with **heavy to very heavy rainfall** at a few places with **extremely heavy rainfall (≥ 21 cm)** at isolated places is very likely on 17th & 18th July and **heavy rainfall** at isolated places on 19th July.

East Rajasthan: Light to moderate rainfall at most places with **heavy to very heavy rainfall** at isolated places is very likely on 17th July; heavy to **very heavy rainfall** at a few places with **extremely heavy rainfall** at isolated places on 18th July and **heavy rainfall** at isolated places on 19th July.

West Rajasthan: Light to moderate rainfall at most places with **heavy rainfall** at isolated places is very likely on 17th July; **heavy to very heavy rainfall** at a few places with **extremely heavy rainfall** at isolated places on 18th July and **heavy rainfall** at isolated places on 19th July.

Jharkhand: Light to moderate rainfall at most places with **heavy rainfall** is very likely at isolated places on 17th July.

Bihar: Light to moderate rainfall at most places with **heavy to very heavy rainfall** is very likely at isolated places during on 17th July.

Chhattisgarh: Light to moderate rainfall at most places with **heavy rainfall** is very likely at isolated places on 17th July.

(ii) Wind Warnings: Squally wind speed reaching 40-50 kmph gusting to 60 kmph over south Uttar Pradesh & adjoining north Madhya Pradesh and 30-40 kmph gusting to 50 kmph over adjoining areas of Bihar, Chhattisgarh & west Jharkhand is likely prevail during next 24 hours and decrease thereafter.

(iii) Impact Expected and Action Suggested due to very heavy/extremely heavy rainfall and squally winds (Uttar Pradesh, Madhya Pradesh, Bihar, Jharkhand and Chhattisgarh)

Impact expected:

- ❖ Breaking of tree branches, uprooting of small trees like banana, papaya, drum sticks. Strong wind and rain may damage plantation, horticulture and standing crops.
- ❖ Partial damage to vulnerable structures due to strong winds and rain.
- ❖ Minor damage to kutcha houses/walls, huts and roads due to heavy rain.
- ❖ Loose objects may fly.
- ❖ Onshore and offshore operations may get affected.
- ❖ Small ships, trawlers and boats may be affected.
- ❖ Road and rail traffic may be affected due to heavy rain and squally winds.
- ❖ There could be localised landslides, mudslides, landslips, water logging, inundation

- and flooding over low lying areas.
- ❖ Occasional reduction in visibility due to heavy rainfall.
 - ❖ Helicopter services may get affected.

Action suggested:

- ❖ People are advised to keep a watch on the weather for worsening conditions and be ready to move to safer places accordingly.
- ❖ Take safe shelters; do not take shelter under trees, as there could be lightning.
- ❖ In case of expected lightning, unplug electrical/ electronic appliances, immediately, get out of water bodies and keep away from all the objects that conduct electricity.
- ❖ Tourism and recreational activities to be regulated.
- ❖ Onshore and offshore activities to be judiciously regulated.
- ❖ Helicopter services to be regulated.

Significant rainfalls accumulated in past 24 hrs recorded at 0830 hrs IST of today, the 16th July, 2025 are given in Annexure-I

Next bulletin will be issued at 2030 hrs IST of today, the 17th July, 2025.

(Ananda Kumar Das)

Scientist-F, IMD, New Delhi

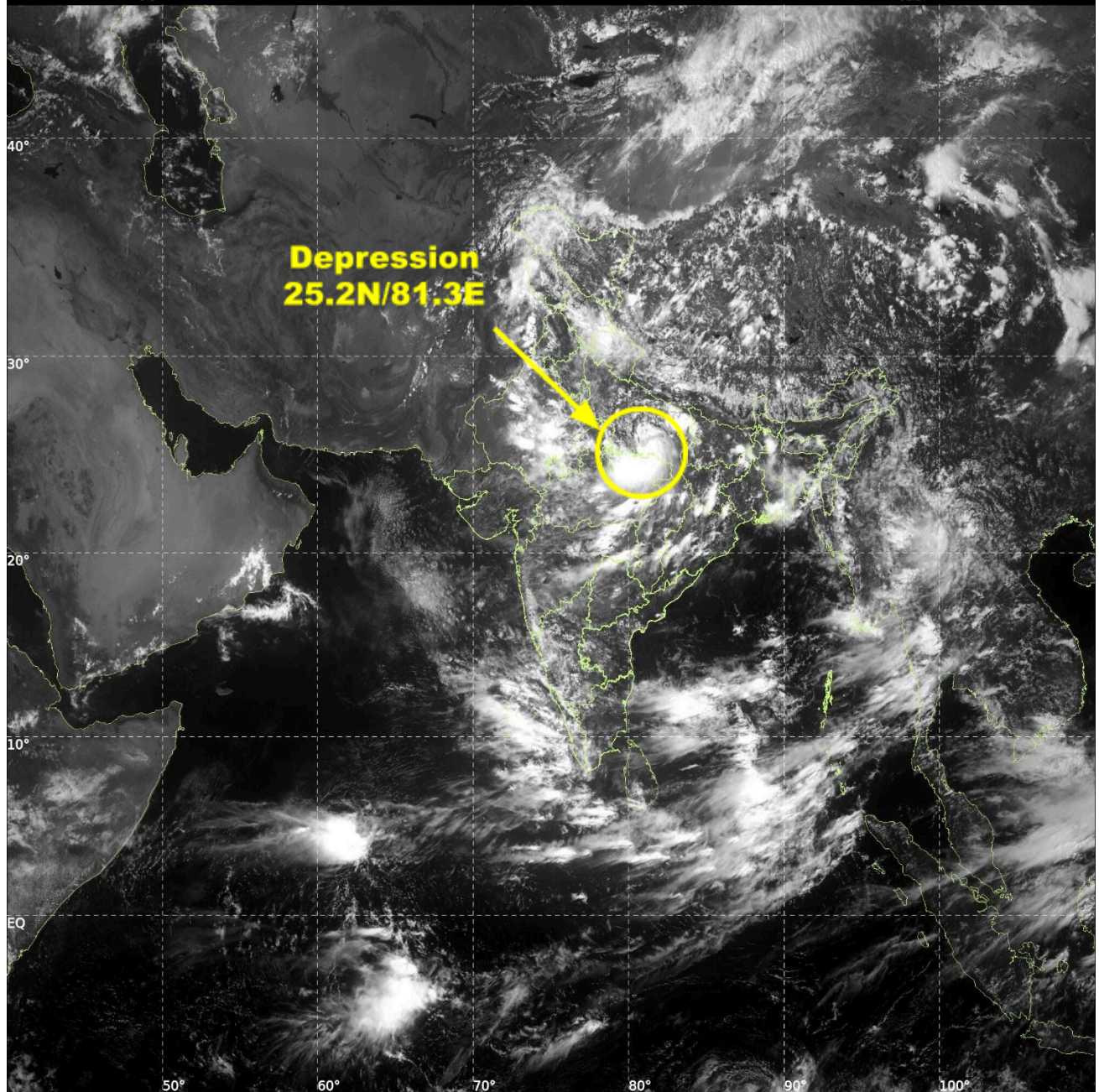
Copy to: Meteorological Centres- Lucknow, Patna, Bhopal, Jaipur, Delhi, Chandigarh, Ranchi, Ahmedabad.



INSAT-3DS IMG, Visible Count @ 0.65 μm
GMT:17-07-2025/(0730-0757) IST:17-07-2025/(1300-1327)
L1C MERCATOR (LINEAR STRETCH: 0.5%)

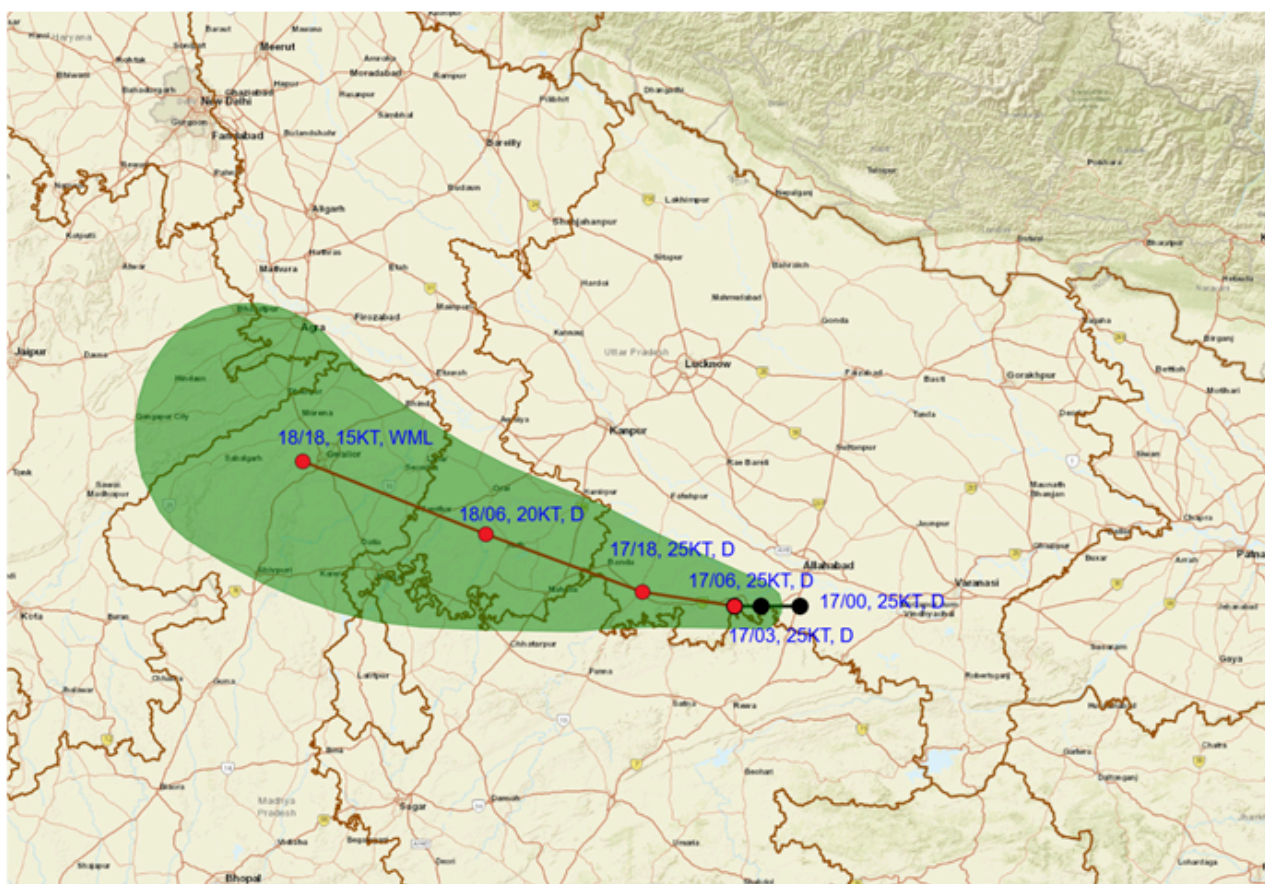
70

439





OBSERVED AND FORECAST TRACK OF LAND DEPRESSION OVER SOUTHEAST UTTAR PRADESH AND ADJOINING NORTHEAST MADHYA PRADESH AT 0600 UTC (1130 HRS. IST) OF 17th JULY 2025

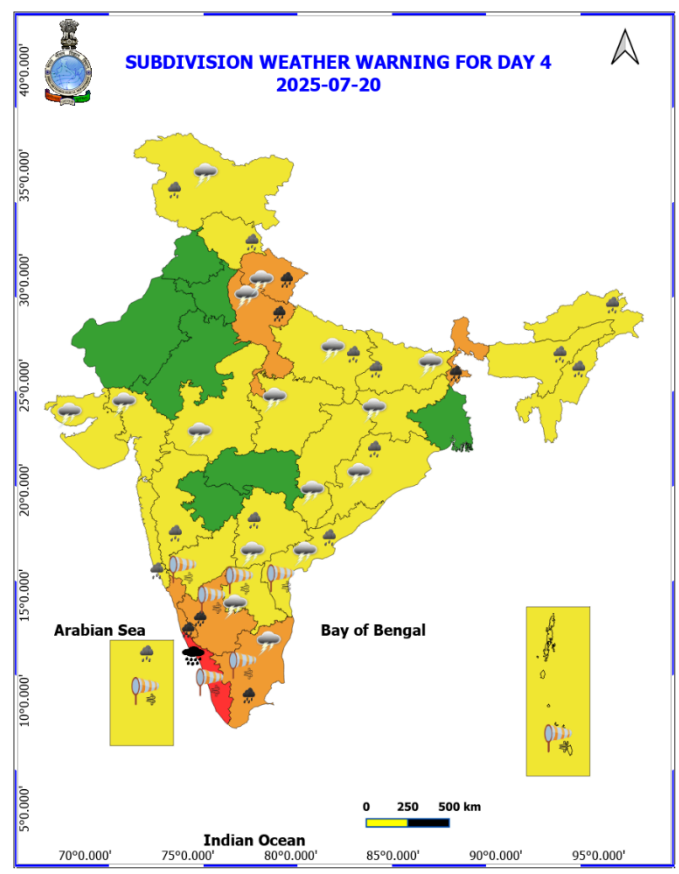
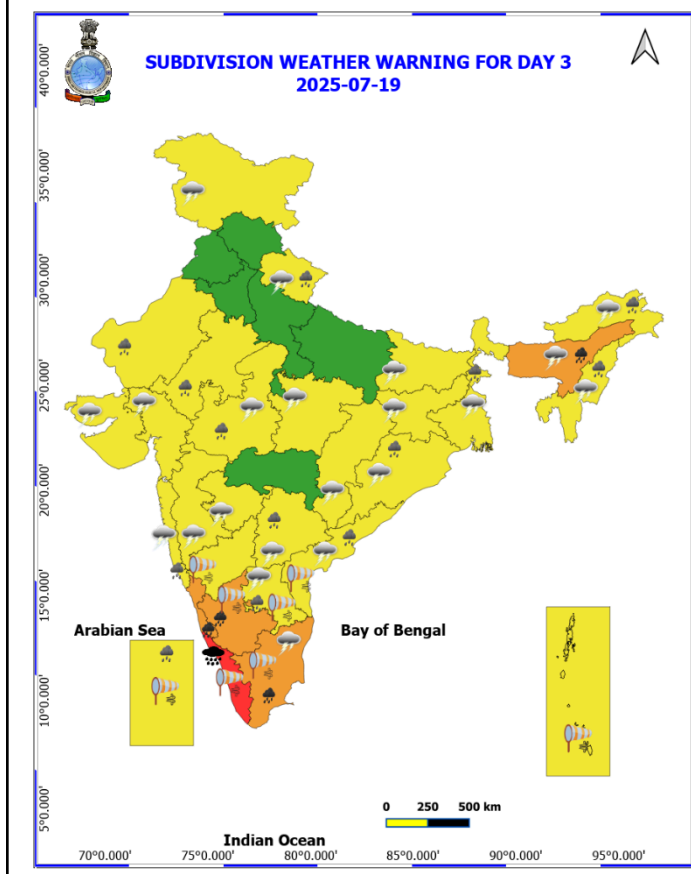
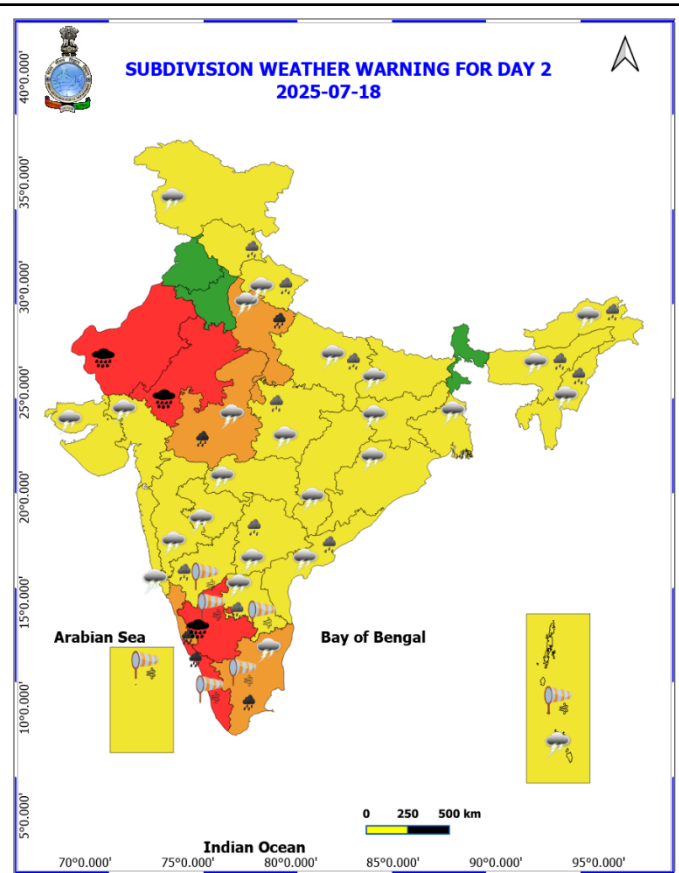
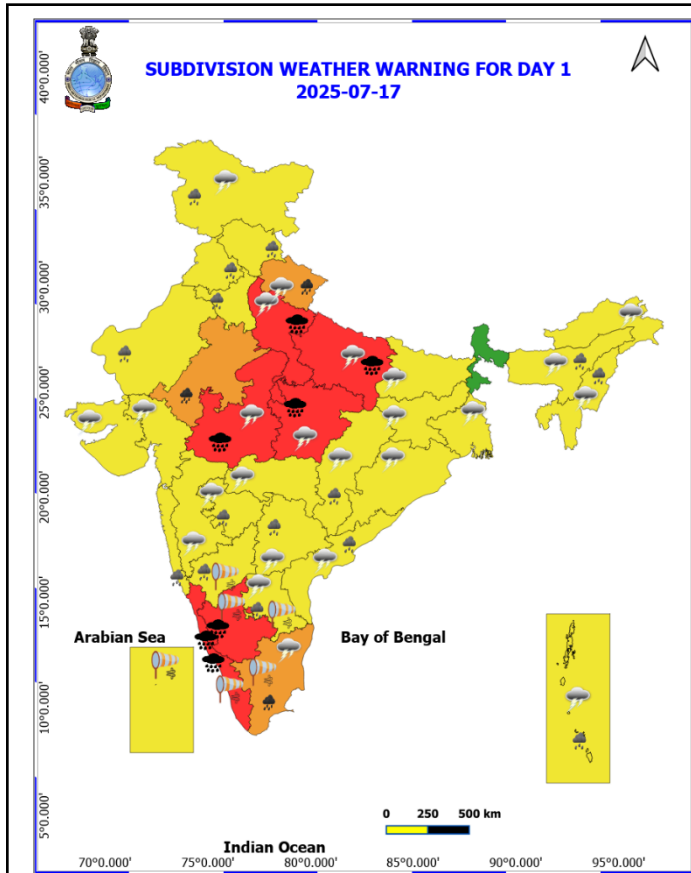


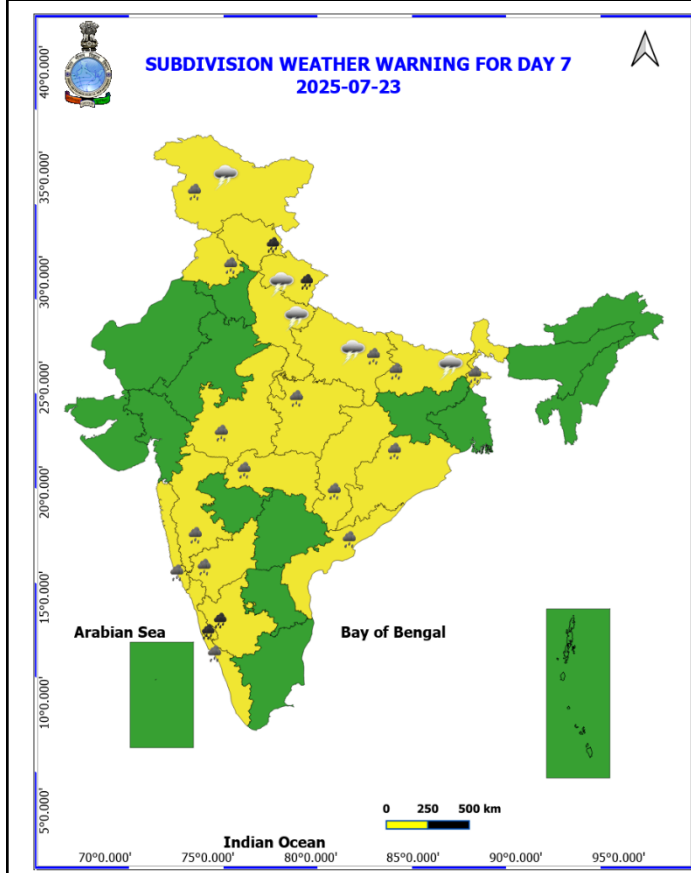
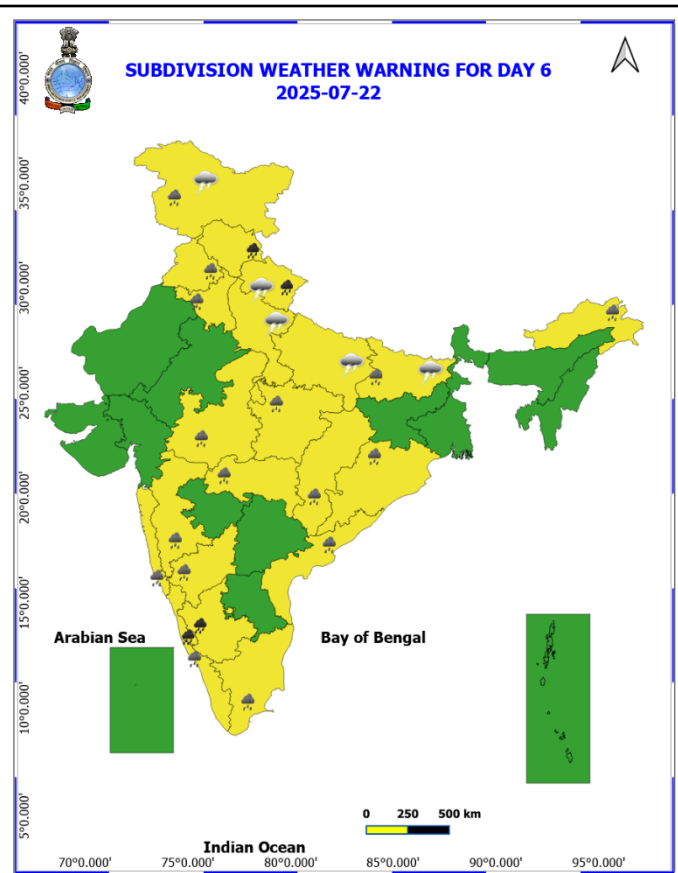
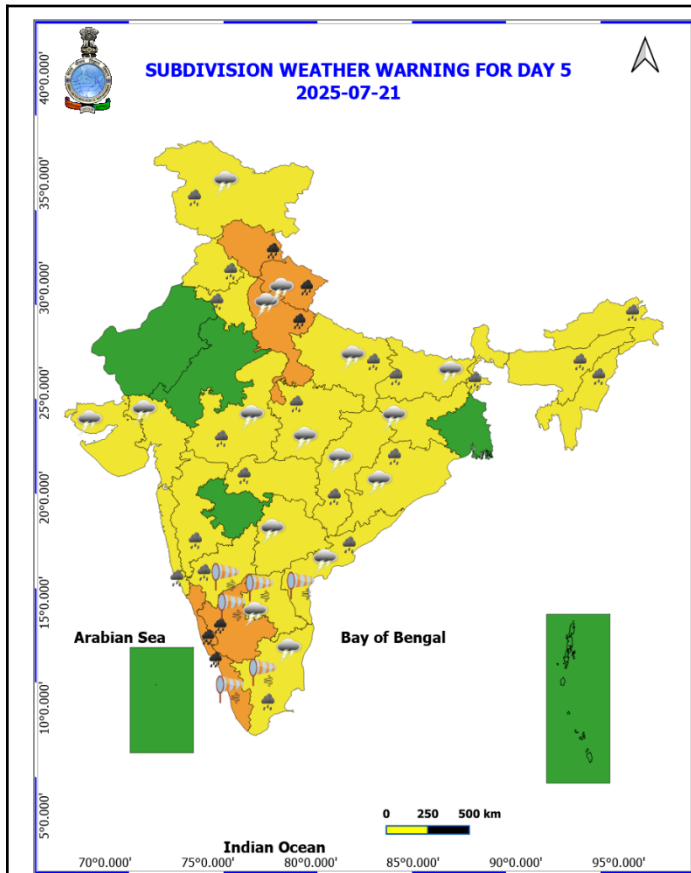
DATE/TIME IN UTC
IST=UTC + 0530
L: LOW PRESSURE AREA
WML: WELL MARKED LOW PRESSURE AREA
D: DEPRESSION (17-27 KT)
DD: DEEP DEPRESSION (28-33 KT)
CS: CYCLONIC STORM (34-47 KT)
SCS: SEVERE CYCLONIC STORM (48-63KT)
VSCS: VERY SEVERE CYCLONIC STORM (64-89 KT)
ESCS: EXTREMELY SEVERE CYCLONIC STORM (90-119 KT)
SuCS: SUPER CYCLONIC STORM (≥ 120 KT)

1KT=1.85 KMPH

- LESS THAN 34 KT
- 34-47 KT
- ≥ 48 KT
- OBSERVED TRACK
- FORECAST TRACK
- CONE OF UNCERTAINTY

Weather Warning Graphics





COLOUR CODED WARNING

No Warning (No Action)
Watch (Be Aware)
Alert (Be Prepared To Take Action)
Warning (Take Action)

Probabilistic Forecast

Terms	Probability of Occurrence (%)
Unlikely	< 25
Likely	25 - 50
Very Likely	50 - 75
Most Likely	> 75

Weather Icons:

- Fog
- Heavy Rain
- Very Heavy Rain
- Extremely Heavy Rain
- Thunder & Lightning
- Hailstorm
- Dust Raising Winds
- Heavy Snow
- Dust Storm
- Heat Wave
- Warm Night
- Hot Day
- Hot & Humid
- Strong Surface Winds
- Cold Wave
- Cold Day
- Ground Frost

* Red colour warning does not mean "Red Alert", Red colour warning means "Take Action".
Forecast and Warning for any day is valid from 0630 hours IST of day till 0630 hours IST of next day.
For more details, kindly visit <https://mausam.imd.gov.in> or contact: 011-2434-4599
(Service to the Nation since 1875)

- Action may be taken based on **ORANGE AND RED** COLOUR warnings.
- Vulnerable regions likely urban and hilly areas action may be initiated for heavy rainfall warning.

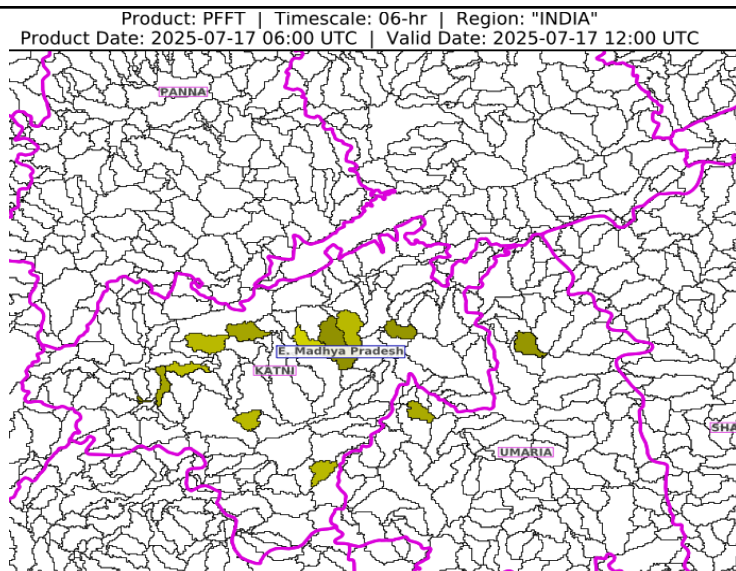
As the lead period increases forecast accuracy decreases.

Flash Flood Guidance

Persistent Flash Flood Threat (PFFT) till 1730 IST of 17-07-2025 :

Low to Moderate Flash flood threat likely over few watersheds and neighborhoods of following Met Sub-divisions in next 06 hours.

East Madhya Pradesh – Katni and Umaria districts.



24 hours Outlook for the Flash Flood Risk (FFR) till 1130 IST of 18-07-2025 :

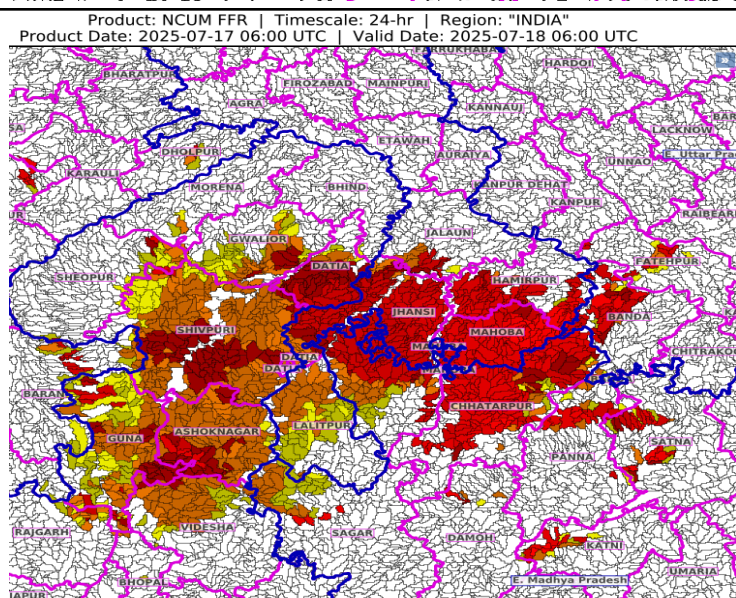
Moderate flash flood risk likely over few watersheds & neighbourhoods of following Met Sub-divisions during next 24 hours.

East Uttar Pradesh - Banda and Fatehpur districts.

West Uttar Pradesh - Hamirpur, Jalaun, Jhansi and Mahoba districts.

East Madhya Pradesh - Chhatarpur, Damoh, Katni, Panna, Sagar, Satna and Tikamgarh districts.

West Madhya Pradesh - Ashoknagar, Datia, Guna, Gwalior, Morena, Rajgarh, Sheopur, Shivpuri and Videsha districts.



Surface runoff/ Inundation may occur at some fully saturated soils & low-lying areas over Area of Concern (AoC) as shown in map due to expected rainfall occurrence in next 24 hours.

Flash Flood Threat	Flash Flood Risk
■ High Threat (Take Action)	■ High Risk (Take Action)
■ Moderate threat (Be Prepared)	■ Moderate Risk (Be Prepared)
■ Low Threat (Be Updated)	■ Low Risk (Be Updated)

Significant rainfall recorded (in cm) from 0830 hours IST of yesterday to 0830 hours IST of today, the 17th July, 2025:

EAST UTTAR PRADESH: Chunar (Mirzapur) 24, Meja (Prayagraj) 21, Jaunpur Tehsil (Jaunpur) 14, Mirzapur Cwc (Mirzapur) 11, Ghorawal (Sonbhadra) 10, Churk (Sonbhadra) 10, Rihand Dam Fmo (Sonbhadra) 10, Varanasi/bab Aero (Varanasi) 9, Varanasi-b.h.u. (Varanasi) 9, Koraon (Prayagraj) 8, Prayagraj Sadar (Prayagraj) 7, Karchhana (Prayagraj) 7,

BIHAR: Bhagwanpur (Bhabua) 16, Rampur (Bhabua) 16, Raghapur (Vaishali) 14, Nauhatta (Rohtas) 13, Sahdei Buzurg (Vaishali) 12, Sasaram (Rohtas) 12, Mahanar (Vaishali) 12, Sheosagar (Rohtas) 11, Rohtas (Rohtas) 10, Dehri (Rohtas) 10, Akorhi Gola (Rohtas) 9, Mahua (Vaishali) 9, Bidupur (Vaishali) 9, Kargahar (Rohtas) 8, Chenari (Rohtas) 8, Indrapuri (Rohtas) 8, Barbigaha (Sheikhpura) 8, Lalganj (Vaishali) 8, Jandhaha (Vaishali) 7, Kudra (Bhabua) 7, Barun (Aurangabad) 7, Bind (Nalanda) 7, Goraul/doli (Vaishali) 7, Banka (Banka) 7, Hilsa (Nalanda) 7, Durgawati (Bhabua) 7, Patepur (Vaishali) 7, Jhanjharpur (Madhubani) 7, Tilouthu (Rohtas) 7, Hajipur (Vaishali) 7, Balchhi (Patna) 7, Bhagalpur (Bhagalpur) 7, Mohania (Bhabua) 7,

EAST MADHYA PRADESH: Naigarhi (Rewa) 25, Mauganj (Rewa) 22, Hanumana (Rewa) 21, Bahri (Sidhi) 20, Chitrangi (Singrauli) 15, Dindori-aws (Dindori) 13, Semariya (Rewa) 13, Sihawal (Sidhi) 13, Raipurkarchuliyan (Rewa) 13, Majhauri (Sidhi) 12, Huzur (Rewa) 12, Kusmi (Sidhi) 12, Beohari (Shahdol) 12, Rampur (Sidhi) 11, Shahpura (Dindori) 11, Mangawan (Rewa) 11, Devser (Singrauli) 11, Sarai (Singrauli) 10, Birsingpur (Satna) 9, Mada (Singrauli) 8, Singrauli-aws (Singrauli) 8, Churhat (Sidhi) 8, Teonthar (Rewa) 8, Jaisingh Nagar (Shahdol) 8, Sidhi (gopadbanas) (Sidhi) 8, Gohparu (Shahdol) 7, Jaitpur (Shahdol) 7, Waraseoni (Balaghat) 7

WEST MADHYA PRADESH: Bhanpura (Mandsaur) 21, Narwar (Shivpuri) 8, Timarni (Harda) 8, Rahatgaon (Harda) 7, Karera (Shivpuri) 7, Harda (Harda) 7

CHHATTISGARH: Janakpur Bharatpur (Manendragarh Bharatpur) 12; Pondi Bachra (Koriya) 11; Kotadol (Manendragarh Bharatpur) 10; Surajpur (Surajpur) 9; Kelhari (Manendragarh Bharatpur) 8; Kusmi (Balrampur), Doura Kochali (Balrampur), Latori (Surajpur),

EAST RAJASTHAN: Ramganj mandi (Kota) 19, Sarmathura (Dolour) 9, Asnawar (Jhalawar) 8, Lalsot (Dausa) 6, Indergarh (Bundi) 4, Govindgarh (Alwar) 4,

JHARKHAND: Hunterganj (Chatra) 13, Borio (Sahibganj) 11, Dhurki (Garhwa) 7, Japla (Palamu) 7, Sujani Kvk Aws (Deoghar) 7, Ghatsila (East Singbhum) 7, Jamshedpur Aero (East Singbhum) 7,